

BLIND THREADED RIVET NUT

PEE VEE ENTERPRISES, NEW DELHI, INDIA



Fasteners Solutions
PASSION WITH VISION

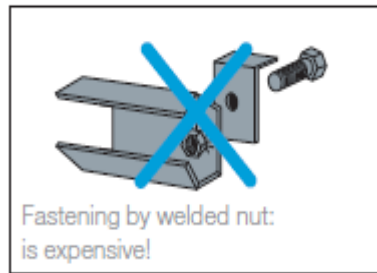
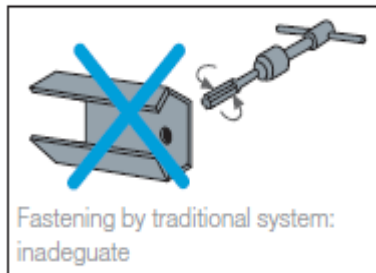
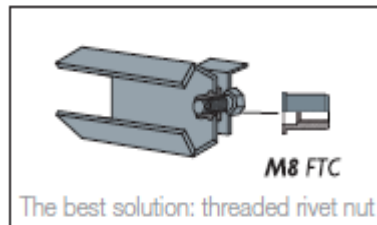
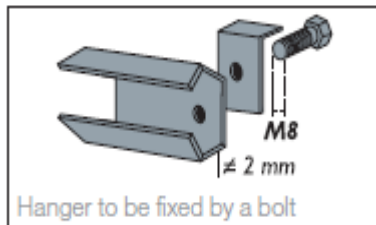
Blind rivet threaded nut is a mechanical fastener that ensures a strong thread in a thin sheet and panel sections. They are called “blind” because they can be installed from one side of panel. It can be used to clinch separate sheets together (acting as a rivet) and allows you to assemble another component with a bolt or screw.

The Blind Rivet Threaded nut are used for most applications where strong threads are required for blind applications. They are installed from one side using a spin/spin technique. In addition to high thread strength and torque-out, these fasteners have minimum inventory requirements since each size can accommodate many grip ranges (material thickness).



Advantages:

- Provides a strong thread in a thin sheet
- Simple blind (one sided) installation
- Fast assembly time
- Low assembly costs : easy installation with 1 single operation of the hand
- Avoids damaging the (pre-coated or – painted) surface of the work piece
- No deformation of the work piece
- Low installation cost : no expensive setting tools needed
- Works in close-to-edge applications
- Unlooseable after setting
- Appropriate for repeated (re-)assembly



Materials : Blind Threaded Rivet Nut Range is available in Aluminium, Steel and Stainless Steel.

Aluminium

Aluminium Alloy, self colour finish.

Used when low weight and higher corrosion resistance is required.

Steel

Low Carbon Steel, zinc plated with CRVI free passivation.

Used for general purpose applications with higher temperature resistance.

Stainless Steel

302, 304 and 316 Stainless Steel, self colour finish.

Suitable for applications requiring corrosion resistance.



PEE VEE ENTERPRISES

Shop No. 27, Manohar Market, Peepal Mahadev Street, Hauz Qazi, Delhi-110006 , INDIA.

E mail. : pvent11@gmail.com, sales@pvfastener.com, sales@powercoilindia.com ,

Website : www.pvfastener.com, online store : www.powercoilindia.com. Contact No. : +91-11-23274568, 23242039



BLIND THREADED RIVET NUT

PEE VEE ENTERPRISES, NEW DELHI, INDIA



Torque Strength : **Strength Test Methods**

Ultimate Torque

Test conditions

- Base material: Steel, 1.2mm thickness
- Affixing plate: SK3 (HRC40 or above)
- Bolt: Hex bolt or cap screw (10.9 or greater)
- Washer: Stainless steel, small round type

Apply torque to the bolt using a torque wrench and measure the maximum torque at which the threading of the Blind Rivet Nut or the bolt fails.

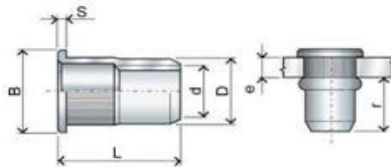
Thread Shear

Test conditions

- Base material: Steel, 1.2mm thickness
- Bolt: Hex bolt or cap screw (10.9 or greater)
- Jig hole diameter (A): Nominal thread size + 1 mm

Apply compressive load to the bolt using a tensile tester and measure the maximum load at which the threads or backside flange part of the Blind Rivet Nut fails.

HEAD **Flat Head** TYPE **Open End** SECTION **Round** SURFACE **Linear Knurls**



Thread	Part No.	Length mm	Grip mm	Hole Dia mm	Barrel Dia mm	Flange Dia mm	Flange Thickness mm
d		L	e		D	B	S
M 4x0.7	150460207004010	10.0	0.3-3.0	6.0	5.9	9.0	1.0
M 5X0.8	150460208005012	12.0	0.3-3.0	7.0	6.9	10.0	1.0
M 6X1.0	150460210006014	14.0	0.5-3.0	9.0	8.9	12.0	1.5
M 8X1.25	150460212508016	16.0	0.5-3.0	11.0	10.9	15.0	1.5
M 10X1.5	150460215010019	19.0	0.5-3.0	12.0	11.9	16.0	2.0
M 12X1.75	150460217512021	21.0	1.0-4.0	16.0	15.9	22.0	2.0

Applications:

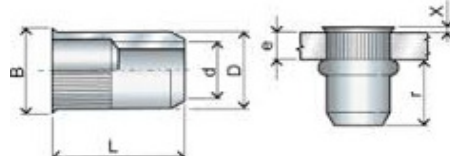
A Blind Rivet Nut Insert is used in all kinds of sheet metal applications. It avoids tapping, welding and working with a bolt and nut. It's a very good solution for enclosed applications that can only be accessed from one side.

Some market segments :

- Aerospace
- Automotive
- White Goods
- Electronics
- Metal furniture
- Railways
- Telecom
- Food
- Chemicals
- Lighting
- Marine
- Offshore
- Medical
- Pulp & paper
- etc...

e.g. cabinets, pipes, cable trays, leg levelling, window & door profiles, rails, benches, fences, metal enclosures, heating installations, airconditioning, swimming pools, solar panels etc.

HEAD **Reduced Head** TYPE **Open End** SECTION **Round** SURFACE **Linear Knurls**



Thread	Part No.	Length mm	Grip mm	Hole Dia mm	Barrel Dia mm	Flange Dia mm	Flange Thickness mm
d		L	e		D	B	S
M 4x0.7	152230207004010	10.0	0.5-3.0	6.0	5.9	7.0	0.6
M 5X0.8	152230208005012	12.0	0.5-3.0	7.0	6.9	8.0	0.6
M 6X1.0	152230210006014	14.0	0.5-3.0	9.0	8.9	10.0	0.6
M 8X1.25	152230212508016	16.0	0.5-3.0	11.0	10.9	12.0	0.6

PEE VEE ENTERPRISES

Shop No. 27, Manohar Market, Peepal Mahadev Street, Hauz Qazi, Delhi-110006 , INDIA.

E mail. : pvent11@gmail.com, sales@pvfastener.com, sales@powercoilindia.com ,

Website : www.pvfastener.com, online store : www.powercoilindia.com. Contact No. : +91-11-23274568, 23242039

